



# NEWSLETTER

## GIRRAWEEEN PUBLIC SCHOOL

Principal: Mr. G Walker  
Phone: 9631 3650

9 Bando Road  
GIRRAWEEEN NSW 2145

11th April 2013

**3 May Mother's Day Mufti Day**

**Gold coin donation**

**7-8 May Mother's Day Stall**

**Gifts \$1- \$10 each**

### Principal's Message

#### School Website:

<http://www.girraween-p.schools.nsw.edu.au/>

Dear Parents,

We conclude this term with a great sense of satisfaction. Our school planning and organisation has been implemented positively by all staff and involved parents. We have established very solid foundations for our school to implement effective programs for all our students Kindergarten to Year 6 during 2013. I am very proud of the participation and performance of our students during this first term of the year. I feel confident that our students will achieve their potential during the following three school terms.

I would like to acknowledge the positive work our teachers have done this term to set up our school programs. Miss Khoury and Mrs Ferns have relieved in Assistant Principal positions effectively this term and I thank them for the work they have done as leaders in our school. Mrs Stavropoulos has established herself in our school. She brings a wealth of experience and enthusiasm to her position of Assistant Principal. A significant amount of school planning, organisation and administration has been done by our Deputy Principals Miss Webster and Mr Gosbell. They have been most effective in their roles and have contributed significantly to the smooth operation of our school. I look forward to a productive year from our teachers and executive staff across the school.

Last night we held our monthly P&C meeting. Our P&C have allocated funds to resurface the playground under the COLA next to the school hall. This is at a cost of \$23,500.00 and comes directly from P&C fundraising and our uniform shop sales. I would like to thank our P&C for this excellent addition to our school playground. I would also like to thank all parents who support our uniform shop and fundraising events. All our students directly benefit from the fundraising the P&C do during the year.

Our P&C have been working with me to lobby Holroyd City Council to improve pedestrian safety at Gilba Road. Following negotiations with council and the support of our local Councillors Whitfield, Lake and Rahme a pedestrian refuge will be installed on Gilba Road during the school holidays. There will be No Parking areas outside the school on Gilba Road and a redirection of pedestrian access into and out of our school at Gilba Road. This will significantly improve safety for pedestrians, but parents must assist by supervising their children when crossing Gilba Road and parking and driving as required in the school zone.

Have a great holiday everyone,

*G. Walker*

### DATES FOR YOUR DIARY

12 April	Anzac Day service, end of Term 1	7-8 May	Mother's Day stall
1 May	<b>Term 2 classes begin</b>	10 May	Winter PSSA Friday afternoons T2-3
3 May	Mother's Day Mufti Day	14-16 May	NAPLAN

# Woolworths Earn & Learn 2013

Dear Parents,

We are participating in the Woolworths Earn & Learn program. Through this program we will be able to get new educational resources for our school. Last year we collected **86000 points**. This helped us purchase musical instruments, educational games, puzzles and sporting equipment. This year our target is **100000 points**. We can do it! All we need you to do is shop for your groceries at any Woolworths.

From Monday 8<sup>th</sup> April to Sunday 9<sup>th</sup> June, we are collecting Woolworths Earn & Learn Points. You will get one Woolworths Earn & Learn Point for every \$10 spent (excluding liquor, tobacco and gift cards). Place the Woolworths Earn & Learn Points onto a Woolworths Earn & Learn Points Sheet and when it's complete, the Points Sheet can be dropped into the collection box here at the school office or at the Toongabbie or Seven Hills Stores. Our boxes are due to arrive at the stores next week, the first week of the holidays, so keep an eye out for them.

At the end of the promotion, we'll be able to get some great new equipment. The range is extensive and offers lots of items ideal for our students – including resources for Maths, English, Science and some fantastic fun supplies for Arts & Craft, Sport and for our library. If you'd like to know more visit [woolworths.com.au/earnandlearn](http://woolworths.com.au/earnandlearn).

Thank you for your support  
Miss Khoury

**The great resources we got with 86000 points**



## Value of the Month: Integrity

### Being consistently honest and trustworthy

In school communities, evidence of this value includes:

- Open and transparent decision making processes
- Consistent school policies and actions

In classrooms, evidence of this value includes:

- Trusting others to work independently
- Doing what you say you will do
- Teachers mark students work consistently to agreed standards

# 6L- Global Connections



Our class has been lucky enough to find ePals in Taiwan. We have been connecting with students our age in Taiwan via the internet. We are focusing on different people around the world and the forms of transport in their countries in our HSIE and Science units.



Taiwan is officially the Republic of China and is located in East Asia.

## What is the capital of Taiwan?

The capital of Taiwan is Taipei City. It is located on the River Danshui, and is the central city of the largest metropolitan area of Taiwan. The city is the political, cultural and economic centre of the country.

## What language and religion do most Taiwanese people follow?

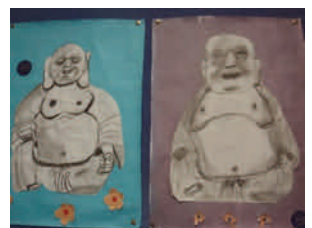
The most popular religion in Taiwan is Buddhism, with almost 4.9 million people following it. Taoism, Catholicism, Protestantism, Islam, and Bahaism are some of the other religions practiced. Taiwanese Hokkien is the language spoken by a majority of the population in Taiwan. However, Mandarin is the official language of the island.

## Sport and other curricular activities

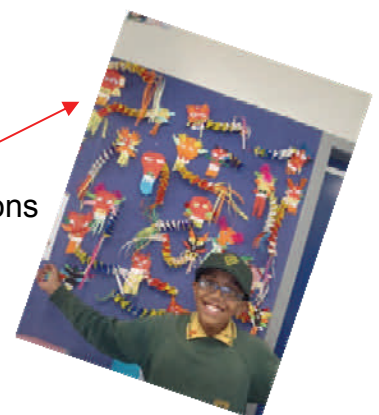
In Taiwan, baseball is the national sport. The second most popular sport is football. Other sports include tennis and cycling. Taekwondo is a martial art which is widely practiced in Taiwan.

Joylyn 6L

In CAPA we have studied Asian art. This has included drawing charcoal likenesses of Buddha and creating a colourful and personal Philippine jeepney. We made coloured dragons to welcome in the New Year.



Ramyaa and her transport assignment on trams.



Ragul and our Chinese dragons

# Out of School Hours Care (OSHC)

## Start Up School Survey

### Girraween PS OSHC School Survey

Parents are asked to complete the survey below to help us plan for a better OOSH in 2014. The survey will not be treated as a commitment to attend, rather it will inform us on the potential usage by families of this community.

#### Section 1 – Potential Usage of the Service

1.1 After School Usage	No of Children	Tick most likely
I will rely on OOSH for after school care > <b>more than 3 days</b> a week		
I would regularly use OOSH after school care > <b>up to 3 days</b> per week		
I have <b>not previously</b> used the service and now intend to use OOSH for after school care > <b>more than 3 days</b> a week		
I have <b>not previously</b> used the service and now intend to use OOSH for after school care > <b>up to 3 days</b> a week		
I <b>may</b> use OOSH for after school care <b>occasionally</b>		
I have <b>not made any decision</b>		
I will <b>not require</b> the service		

1.2 Before School Usage	No of Children	Tick most likely
I will rely on OOSH for before school care > <b>more than 3 days</b> a week		
I would regularly use OOSH before school care > <b>up to 3 days</b> per week		
I have <b>not previously</b> used the service and now intend to use OOSH for before school care > <b>more than 3 days</b> a week		
I have <b>not previously</b> used the service and now intend to use OOSH for before school care > <b>up to 3 days</b> a week		
I <b>may</b> use OOSH for before school care <b>occasionally</b>		
I have <b>not made any decision</b>		
I will <b>not require</b> the service		

<b>1.3 Vacation Care Usage</b>	<b>No of Children</b>	<b>Tick most likely</b>
<b>I will rely on OOSH for Vacation care &gt; more than 3 days a week</b>		
<b>I would regularly use OOSH Vacation care &gt; up to 3 days per week</b>		
<b>I have not previously used the service and now intend to use OOSH for Vacation care &gt; more than 3 days a week</b>		
<b>I have not previously used the service and now intend to use OOSH for Vacation care &gt; up to 3 days a week</b>		
<b>I may use OOSH for Vacation care occasionally</b>		
<b>I have not made any decision</b>		
<b>I will not require the service</b>		
<b>I would consider sending my child to another local Vacation Care Service – please provide more information</b>		

## Section 2 – Daily Usage Forecast

### Forecast of Usage

Please place the number of children likely to be using the service during 2014

	<b>Monday Number</b>	<b>Tuesday Number</b>	<b>Wednesday Number</b>	<b>Thursday Number</b>	<b>Friday Number</b>
<b>Before School</b>					
<b>After School</b>					

<b>Please return this note to the school office by</b>	<b>12 April</b>	<b>2013</b>
--	-----------------	-------------

Parent / Carer Name	
Phone Number	
Childs Name(s)	
Class(s)	

Thank you,



# SOCCER CLINICS

Boys & Girls - Ages 5-14  
9am - 3pm

**Mon 15-Fri 19 Apr**  
**Pymble, Dee Why**  
**Mosman**

**Mon 22-Mon 29 Apr**  
**Mona Vale, Balgowlah**  
**Cammeray, Prospect**

Book 4 Children & get the 5th FREE  
Star Sports Soccer Ball & Shirt FREE\*

## Clinic Features

- Weekly, daily & group discounts
- Strict sign in / sign out policy
- Afterschool available until 4 pm.
- Professional tuition
- Approx 1:12 ratio coach to players
- Registered child care benefit provider
- Modified program to suit all ages & abilities
- Awards/Certificate/Evaluation on Friday.
- Wet weather program implemented if necessary
- Weekly Attendees receive a free Ball & Shirt\*



Fees		Daily Rate	Weekly 5 Days
Full Day	9 am to 3 pm	\$60	\$250
Half Day	9-12 or 12-3	\$35	\$150
Group of 5 One rego is		Free	Free
Sibling Discount (Per child per full day week)		nil	\$10
After Care	3 pm - 4 pm	\$10	\$45
Soccer Ball & Shirt Each		\$10	Free



Groups generally are  
**MINI-Ages 5 & 6:** Fun ball skills & fundamentals of soccer in small sided games  
**JUNIOR-Ages 7-8:** Advanced skill development & ball mastery.  
**SENIOR-Ages 9-14:** Skill development/reinforcement & tactics.

Registered Child Care Provider

Ph 1300 752 977

www.starsportscamps.com



## UNIFORM SHOP NEWS TERM 2

Uniform Shop will be open on **30th April** and **1st May** from 8.45 to 10am.



Dear parents,

When paying for excursions, book packages or other events that require money, please only include Australian money.



Money from another country included in your payment, will be returned to you and we ask that you provide a payment with Australian money.

<http://www.parentingideas.com.au/Home>

Parentingideas Magazine

Issue 8



## LIMITED VACANCIES!

Preschool is a necessary stepping-stone to 'big school' and an important stage in a child's development. At First Academy Preschool Childcare, we pride ourselves on providing a safe and nurturing environment in order for your child to reach their full potential.

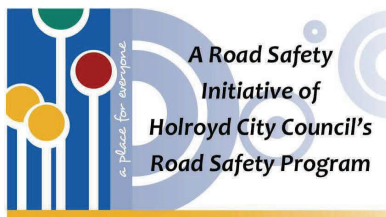
Our centre caters for children from 0- 6 years of age, operating between 7:00 am and 6:00 pm and offering:

- Quality supervised, learning and development programs integrated with play time
- School readiness and transition programs for pre-school children
- Fun and enriching activities
- All meals, including hot lunches, fruit and milk

For enrolments or any enquiries, please call **9863 2361** or visit the centre at 35 Carinya Rd. Girraween and meet our qualified and friendly staff.

First Academy Preschool Childcare  
The Kids Paradise.





# ROAD SAFETY FACT SHEET

## School Zones

This fact sheet provides an overview of some of the penalties that apply to School Zones.



You must not stop your vehicle on a length of road or in an area in which a NO STOPPING sign applies.

No Stopping includes when the vehicle is not moving but the engine is still running

**Penalty \$298 + 2 Demerit Points**



You are allowed to stop your vehicle only to set down or pick passengers, or goods.

Your vehicle must not stop for more than 2 minutes. The driver must not be more than 3 meters from the vehicle.

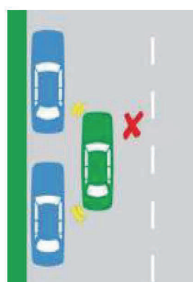
**Penalty \$165+ 2 Demerit Points**



You must not stop or park your vehicle in a bus zone for any reason.

This includes when the vehicle is not moving but the engine is still running.

**Penalty \$298 + 2 Demerit Points**



You must not stop your vehicle or park in the middle of the road to drop people Off or pick them up.

Always stop or park legally and safely at the edge of the road or in a parking area.

**Penalty \$298 + 2 Demerit Points**



You must not stop or park your vehicle on or near a pedestrian crossing to drop people off or pick them up

**Penalty \$397 + 2 Demerit Points**



You must not make a U-turn without giving way to pedestrians or vehicles in a school zone

**Penalty \$397 + 4 Demerit Points**



You must not use a mobile phone whilst driving.  
Using your mobile phone whilst driving is distracting and dangerous, and is putting lives at risk.

**Penalty \$397 + 4 Demerit Points**

Parking and driving unsafely can put children's lives at risk.

Take care when in School Zones

For more information visit [www.rta.nsw.gov.au](http://www.rta.nsw.gov.au)

Or Contact Holroyd City Council's Road Safety Officer on Ph: 9840 9880



# CANTEEN MENU

## HOT FAVOURITES

Hot Dog - 100% Chicken Halal With Sauce	\$ 2.20
Chicken Nuggets	\$ 0.60
Hash Brown	\$ 1.00
Potato Wedges	\$ 1.50
Garlic Bread	\$ 1.50

## BURGERS

Chicken Burger - 100% Halal Chicken !	\$ 3.50
Hamburger - Tomato Lettuce, BBQ Sauce	\$ 3.50
Cheeseburger - Cheese, Tomato Sauce	\$ 3.50
Vege Burger	\$ 3.50

## PIE & SAUSAGE ROLL

Party Pie	\$ 1.00
Meat Pie	\$ 3.20
Potato Pie	\$ 3.80
Sausage Roll	\$ 2.50

## PIZZA & PASTA

Pizzas - Bacon & Cheese or Hawalin	\$ 2.50
Pizzas Large Slab - BBQ Chicken or Margharita	\$ 3.50
Lasagna or Spaghetti Bolognese - Beef	\$ 3.50
Macaroni & Cheese	\$ 3.00

## OTHER HOT STUFF

Chicken Crackles	\$ 0.70
Yummy Drumsticks	\$ 1.20
Fish Fingers	\$ 0.60
Corn Cob	\$ 0.80
Cup of Noodles - Chicken, Beef	\$ 2.50
Mini Hot Dog	\$ 1.20
Toasted Cheese Sandwich	\$ 1.60

## WRAPS - LARGE

Salad Wrap	\$ 3.50
Chicken Salad Wrap	\$ 4.50
Hawaiian Wrap - Chicken, Lettuce, Pineapple, Mayo	\$ 4.50
Sweet Chilli Wrap - Chicken Tender, Lettuce, Mayo	\$ 4.50

## SANDWICH & SALADS

Vegemite, Jam or Honey	\$ 1.50
Devon	\$ 1.60
Cheese	\$ 1.50
Egg	\$ 2.00
Salad	\$ 2.80
Ham or Tuna - Salad add \$1.00	\$ 2.50
Chicken	\$ 3.00
Extras - Mayo 20c, Cheese, Tomato, Beetroot, Cucumber Carrot Pineapple 40c Sauce Portions 30c Lunch Bags 10c	
Salad Bowl - Light Tasty Cheese	\$ 3.50
Salad Bowl - Chicken, Tandoori Chicken, Ham, Egg, Tuna	\$ 4.80
Caesar Salad	\$ 4.20
Caesar Salad - With Chicken	\$ 4.80



## SNACKS

Red Rock Chips - Honey Soy	\$ 1.20
Jumpys	\$ 1.00
Mamee Noodles	\$ 1.00
JJ's Chicken Crackers	\$ 1.20
Popcorn	\$ 1.00
Choc Chip Cookies	\$ 1.00
Ovalteenies	\$ 1.20
Eucalyptus Drops	\$ 0.70
Yoghurt - Various Flavours	\$ 2.00

## HOMEMADE CAKES

Homemade Muffins - Various	From \$ 1.00
Brownies	\$ 1.00
Banana Bread	\$ 2.00
All Homemade Items are "Light"	

## MILK DRINKS

Moove 300ml - Chocolate or Strawberry	\$ 1.80
Moove 500ml - Chocolate or Strawberry	\$ 2.80
Hot Chocolate	\$ 2.00
Up & Go Breakfast Drink	\$ 2.00
Dare Iced Coffee - (Teachers & Parents Only)	\$ 3.60

## COLD DRINKS

Poppers 100% Juice	\$ 1.20
Berri Pure Fresh Juice	\$ 2.00
Sprite Zero	\$ 2.00
Diet Coke - Caffeine Free	\$ 2.00
Aroona Mineral Water	\$ 2.00
Water - 355ml	\$ 1.20
Water - 600ml	\$ 1.60
Jelly Cup	\$ 1.00

## SLUSHIES

Small Slushie	\$ 1.50
Large Slushie	\$ 2.00

## ICE CREAMS

Jelly Joys	\$ 0.20
Fruitee Ice	\$ 0.40
Sour Snap Aparts	\$ 1.00
Sunny Boys	\$ 1.00
Ice Mony	\$ 1.00
Zooper Dooper	\$ 0.70
Mini Calippo	\$ 1.20
Paddle Pops	\$ 1.60
Frozen Yoghurt	\$ 2.20

## FRESH FRUITS

Apple, Orange, Banana, Watermelon	\$ 1.00
-----------------------------------	---------



Regular \$1.50 OR Large \$2.00

## \$4 Lunch Meal Deal

Available Every Day

- 1 x Hot Dog (100% Chicken)
- 1 x Drink of Your Choice\*
- 1 x Packet of Chips



\* Bottle of Water, Popper or Soft Drink Only

